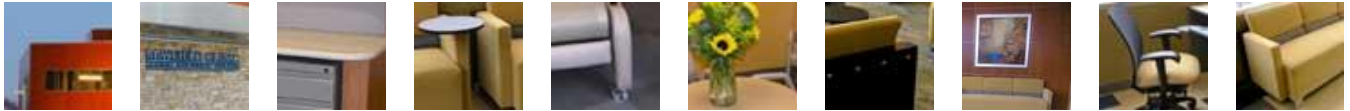


PROJECT GALLERY

Mayfield Clinic Spine Surgery Center

Healthcare/Corporate Office



Visit the Mayfield Clinic Spine Surgery Center Project Gallery at www.ostermancron.com to view larger photos

Objective: Innovations in spine procedure technology means more patients can undergo surgery and go home within a day. As testament to these advancements, the new 13,000 square foot Mayfield Clinic Spine Surgery Center includes two operating rooms for outpatient surgery, a pain relief procedure suite, and private, comfortable pre-op and post-op environments.

In constructing and furnishing the highly visible and distinctive surgery center off of Interstate-71 in Cincinnati, the primary objective was to create a warm, comfortable, non-institutional environment for patients as well their family and friends who may have long wait times. The space was designed to ease anxiety with warm, comforting colors and textures which begin in the rich wood exterior of the building. It was important that the furniture selection executed on comfort and style, while also withstanding the wear-and-tear of a busy healthcare center.

Project and Products: Gina Hughes, Administrator and Director of Nursing at the Mayfield Clinic worked closely with architectural firm GBBN Architects and the OstermanCron team to select the furniture, fabrics, and finishes that would create the relaxing and comfortable setting that patients and loved ones would appreciate.

OstermanCron provided new furniture solutions in the following areas:

- Main lobby/waiting area is furnished in Kimball Delano sofas, chairs and tables and includes a children's play area
- The employee lounge is outfitted with a Kimball workstation, Delano lounge chairs, Nevins tables and chairs by Keilhauer
- Patient recovery rooms feature Herbie recliners from Patrician and open mesh patient chairs from KI
- The consulting area incorporates a Kimball table and open mesh chairs from KI
- Task chairs are from Izzy and are used throughout facility for a consistent look
- Private offices are furnished with Kimball Traxx and Tile

Why the furniture worked: OstermanCron was able to provide furniture options that suited the healthcare environment yet did not look or feel institutional. Rich wood finishes and fabrics integrated the color palette and helped create a soothing, warm environment. The furniture also provided the comfort and durability to endure for years. Additional furniture amenities were added for the efficiency and comfort of family and friends who may spend hours in the Clinic while patients go through surgery and recovery. For example, chairs in the waiting area have table extensions so visitors can write or use a laptop. (The facility is wireless.) There is also a well-equipped children's area with furniture and entertainment options for the smaller crowd.

Why OstermanCron?: Broad furniture selection and strong healthcare expertise were critical to the project and OstermanCron delivered on both fronts. Responsive, knowledgeable account management, strong communication, and the ability to deliver on an aggressive deadline helped make the project a success.

Installation and Moving: Wessels Workplace Services installed the office.

Design: Amy Mees, IIDA, GBBN Architects